



THE STEELWORKS

CLEAN SWING

Quick Inset Series

The Right Solution For Clean Environment Applications

CLEAN SWING QI FRAMES

- ✓ Clean. & Clean
- ✓ Environmental Control.
- ✓ Reliable.



The **QUICK INSET DOOR** is a Unique Split Frame Design that combines the Door Frame and Jambs in one easy package. This design eliminates the need to install jamb casings, bucks, trim and other costly construction framing that is required when installing standard doors and frames. Saving you time and money. Our doors are ready to install, so nearly everything is done before we get to you, which means they are ideal for Plant Shutdowns.

Steelworks offer a wide range of features ensuring that our doors are both strong and dependable. Our doors provide reliable operation that withstand moisture, harsh chemicals and abuse in the toughest of environments. Available in stainless, 304, 316 # 4 finish, carbon & fiberglass, with reinforced hardware locations and finished edges.

Steelworks, we build doors that support your business.

- 1 When you need Operational Efficiency
- 2 Ideal Install during Plant Shutdowns
- 3 Cost Effective & Low Maintenance
- 4 Unsurpassed Quality



THE QI SPLIT FRAME & JAMB CONSTRUCTION:

- Steelworks **QI Split Frame** saves time, money and added coordination between other trades.
- Constructed from heavy **14 ga. Stainless or Carbon** and is **Custom Built** to meet your wall thickness.
- Fasteners inset inside the frame, secure the fascia side to the jamb side. Allowing the door to be adjusted, leveled and plumb prior to fastening the frame to the building wall.
- Smooth **stainless caps** are placed over the fasteners for a clean finished look.
- Faces of the **frame are fully welded, ground and polished.**
- Top edges of the frame are sloped for easy cleaning and doesn't allow a flat spot for foreign objects to gather.
- Great for retrofits and provides a clean finished look without the need for drywall and paint repair.
- Can be used with our Stainless, Fiberglass and Steel Door Panels
- Passivation of all weld
- Concealed Fasteners for Retrofit Applications
- Smooth Stainless Caps over fasteners provide a clean finished look

DOOR SEALS:

- A Weather Seal is adhered directly to the stop portion of the frame, this keeps it from being damaged as people and carts traverse through the opening and provides a consistent tight seal

HINGES & HARDWARE:

- Full Height Stainless, mortised **Continuous Hinge** as standard
- We use Grade (1) Heavy Duty Hardware and can **provide any configuration** or manufacturer to meet customer specifications
- Stainless Push/Pull with Stainless Door Closer
- Stainless Panic with or without Lever Handle

OPTIONS:

- Custom Integrated **Touchless Controls, Card Readers and Mag Locks** can be incorporated into the design for Interlocking and or Security.
- **Custom Sized Hospital or Aseptic Stop** for ease of cleaning the floor through the door opening.
- Ready to install, beneficial and expedient, fully configured door systems are **Ideal for Plant Shutdowns.**
- Available in Carbon Steel with Painted Custom Color finish
- **Vision Panels:** Insulated and Non-Insulated Glass or Lexan
- **Vision Panels:** the 4 sided sloped vision panel frame eliminates debris depositing on the sill
- **Steelworks Smooth Vison** (provides a flush vision area on both sides for a smooth clean finish).
- Custom Permanent Marked **Signage and Logo** can be added to any panel

WARRANTY:

One Year Limited Warranty on Material and Workmanship



Clean Swing Automated Features:

- Power Automatic Operators can be added to any of our Door Systems
- Stainless full width Mounting Plate
 - Stainless Sloped Hood
 - Aluminum Machined Control Arms (304 or 316 stainless option available)
 - Galvanized Control Arm Coupler & Pins (304 or 316 stainless option available)
 - Adjustable Speed, Open & Close
 - Activation Interface Terminals
 - Adjustable Timer to Close
 - Adjustable Force to Open & Close
 - Interlock Terminals
 - Mag Lock Interface Terminals with DC Power
 - With Power Outage Door can be used Manually

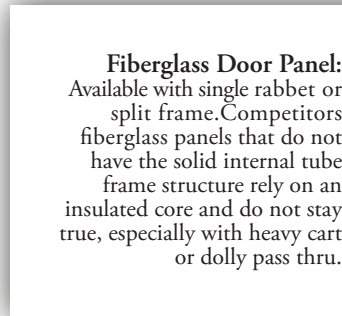
Integrated Controls and Locks

- Wave Switch-Touchless Activation
- Card Reader
- Emergency Exit Devices
- Request to Exit
- Mag Locks
- Electric Hardware

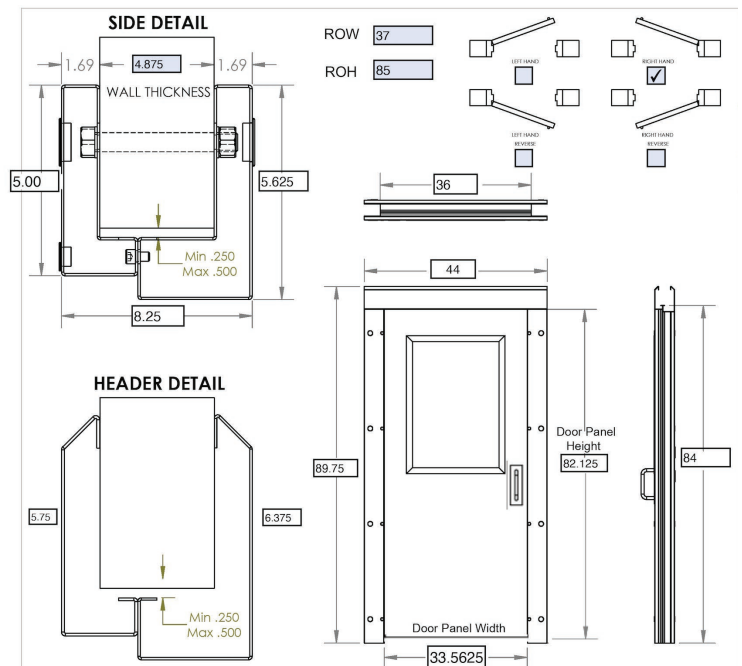
Any Hardware Configuration

All Accessories and Interface Terminals can be Included to match any customers requirements and prewired at the factory

Designed and Built to meet the Customers Exact Requirements



Fiberglass Door Panel:
Available with single rabbet or split frame. Competitors fiberglass panels that do not have the solid internal tube frame structure rely on an insulated core and do not stay true, especially with heavy cart or dolly pass thru.



Distributor Information

Section



919-639-2400 • 1448 James Norris Road.
Angier, NC 27501 • www.swsteelworks.com