

CAP dome skylight

Size Requirements

Rough Opening Dimensions
(Acrylic—Between 14"x14" to 102"x150" in ¼" increments)
(Polycarbonate—Between 14"x14" to 67"x96" in ¼" increments)

Thermal Barrier

Yes (Standard)
No

Glazing Options

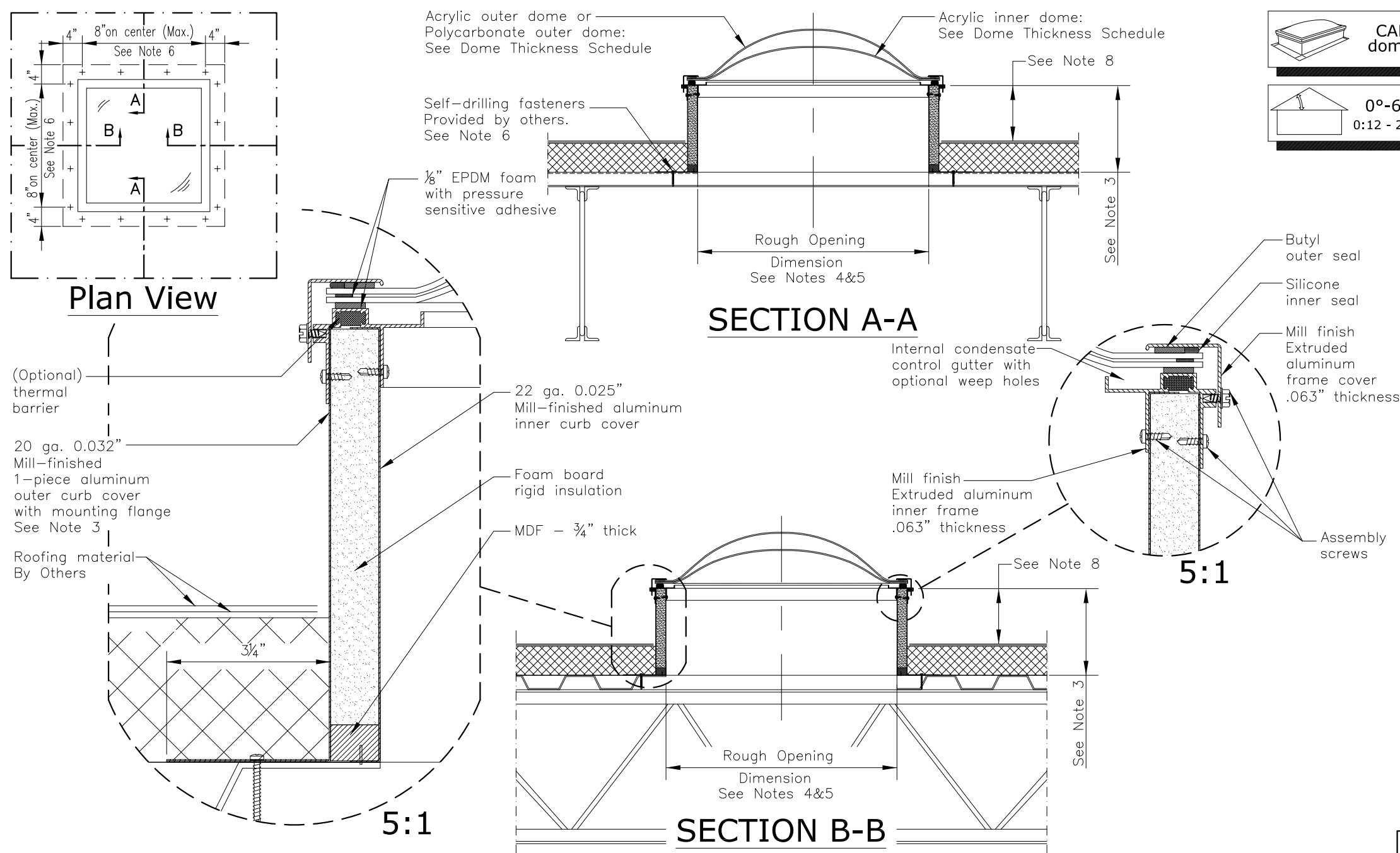
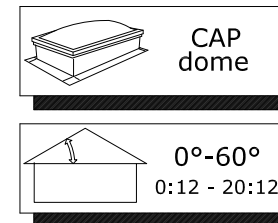
Clear over Clear Acrylic (04A)
Clear over White Acrylic (04W)
White over Clear Acrylic (04T)
Bronze over Clear Acrylic (04B)
Polycarbonate over Clear Acrylic (04I)
Polycarbonate over White Acrylic (04V)
Thicker clear over clear Acrylic (04D) Fall protection tested with maximum size not to exceed 36 Square Feet
Thicker white over clear Acrylic (04F) Fall protection tested with maximum size not to exceed 36 Square Feet
Thicker Clear over Clear Prismatic (04E)
Thicker White over Clear Prismatic (04G)
Clear over Clear Prismatic (04H)
Polycarbonate over Clear Prismatic (04P)
White over Clear Prismatic (04S)

Curb Height

4"
6"
9" (Standard)
12"
16"

Curb Options

Vent on one side
Vent on two sides
Vent on three sides
Vent on four sides
Termination strip with no vents



GENERAL NOTES

1. This drawing emphasizes the VELUX CAP Commercial Skylight. It illustrates a general arrangement layout (plus recommendations) for a VELUX CAP installation in a 0-60 degree roof pitch application.
2. The architectural/structural design and specifications for the inclusion of a commercial skylight, such as the VELUX CAP, in any roofing/ceiling application is determined and provided by others. The design criteria includes, but is not limited to design loads, structural configurations, structural framing member sizes and material, architectural finishes and integration with the roofing/ceiling systems of the building. VELUX recommends compliance by all designers and installers with all local and industry specific building codes and guidelines. VELUX assumes no responsibility or liability in the design, construction and performance of a building structure by others.
3. The standard curb height for the CAP skylight is 9". Curb heights of 4", 6", 12" and 16" are also available.
4. Acrylic dome skylights available at custom sizes between 14"x14" and up to 102"x150" in ¼" increments. VELUX requires rough opening dimensions for CAP skylights.
5. Polycarbonate dome skylights available at custom sizes between 14"x14" and up to 67"x96" in ¼" increments. VELUX requires rough opening dimensions for CAP skylights.
6. Set flange into a bead of silicone & secure to deck with #8 x 1½" length or larger stainless steel, self-drilling fasteners, appropriate for supporting structure. Provided by others.
7. Acrylic glazings 04D and 04F have 0.118" thickness for inner and outer domes. All Prismatic inner domes 0.125" thick.
8. It is the responsibility of the installer to comply with all local Building Codes and Ordinances regarding height of skylight dome above roofing surface.

This drawing is an instrument of service and is provided for informational use only.

Dome Thickness Schedule

Skylight Area	Outer Dome Thickness		Inner Dome Thickness
	Acrylic	Polycarbonate	
≤12sq.ft.	0.080"	0.150"	0.080" *
>12sq.ft. - ≤18sq.ft.	0.093"	0.150"	0.080" *
>18sq.ft. - ≤36sq.ft.	0.118"	0.150"	0.093" *
>36sq.ft. - ≤64sq.ft.	0.150"	0.150"	0.118"
>64sq.ft.	0.177"	0.150"	0.150"

See General Note 7

* Indicates inner dome thickness of 0.118" when used with Polycarbonate outer dome



VELUX
1418 Evans Pond Road
Greenwood, SC 29649
1-800-88-VELUX
www.VELUXUSA.com

CAP Dome Commercial Skylight